



WinDIAS 3.2 Install Guide

Contents

About this document	1
PC Requirements.....	1
Installing WinDIAS 3.2.....	1
Running WinDIAS 3	2
Setup Cameras supplied with Standard and Rapid systems.....	2
Install Camera Drivers.....	2
Selecting camera in WinDIAS 3	2
Configure the Camera.....	3
Save Camera Settings.....	4
Visual Step-By-Step	5
Running CD.....	5
WinDIAS 3 Setup	7
Installing camera drivers for WinDIAS 3 Standard and Rapid Systems.	11

About this document

This describes how to install WinDIAS 3.2. The screen shots shown here are as seen on Windows 7. If you have Windows XP or Vista then the install process may look and behave slightly differently.

PC Requirements

You need:

- A dual core CPU, either an Intel Core Duo and later, or AMD X2 or later.
- Microsoft Windows XP (SP3), Vista (32 or 64 bit), Windows7 (32 or 64 bit).
- Minimum of 1 USB port for WinDIAS dongle, and 1 for camera or scanner.
- CD ROM drive if installing software from a CD
- Optional: Microsoft Excel for processing saved measurements
- Acrobat Reader for reading documentation.
- IDS uEye video camera driver version 3.8 (if using an IDS uEye camera) provided on WinDIAS 3.2 CD.

Installing WinDIAS 3.2

Insert the WinDIAS 3 CD.

The CD should autorun and display the CD Menu screen.

If this does not happen, run the Setup file from the CD-ROM drive.

If running Windows Vista or later, you may be asked to confirm to run Setup.

Under the WinDIAS 3.2 section, click the Install WinDIAS 3 link.



Running WinDIAS 3

Insert the WinDIAS dongle



Run WinDIAS via the Start Menu icon or via the desktop icon




Setup Cameras supplied with Standard and Rapid systems

This section is required if your IDS uEye Camera was not supplied by us as part of a WinDIAS Standard or Rapid system.

Install Camera Drivers

From the CD menu select the driver to install for your version of Windows, either **for 32 bit Windows** or **for 64 bit Windows**.

To determine which version of Windows you are running do the following:

1. Open System by clicking the **Start** button , right-clicking **Computer**, and then clicking **Properties**.
2. Under System, you can view the System type will be either:
 - 32-bit Operating System, in which case select **for 32 bit Windows**.
 - 64-bit Operating System, in which case select **for 64 bit Windows**.

On the **Setup Type** screen select **USB** instead of Complete.

When the IDS uEye Setup is complete you are ready to use the camera with WinDIAS.

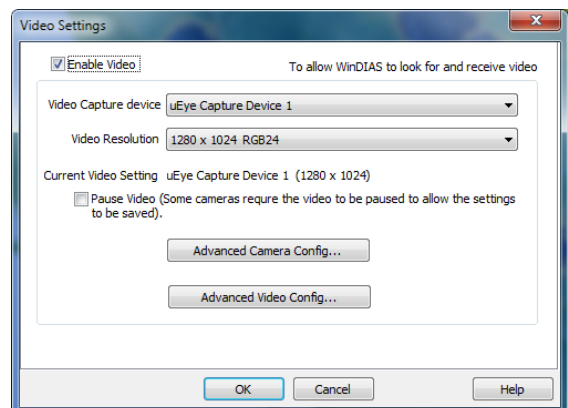
Selecting camera in WinDIAS 3

1. Connect the camera to a USB 2 port on the computer. Wait for Windows to install the driver for the camera.



2. Run WinDIAS from the Start Menu or Desktop icon.
3. From the Settings menu select Video to display the Video Setting window.
4. Tick the Enable Video tickbox.
5. Select uEye Capture Device 1
6. Click OK to accept Video Settings.
7. After a few seconds the video image should appear in the main window.

Hint: sometimes it is necessary to disconnect and reconnect the camera lead for WinDIAS to detect it.





Configure the Camera

Set the aperture and focus manually, then in **View, Configuration, Video, Video Capture Device, Advanced Camera Config.**

The IDS camera software will expose a suite of 6 tabbed camera setting windows.

For a quick start I suggest :

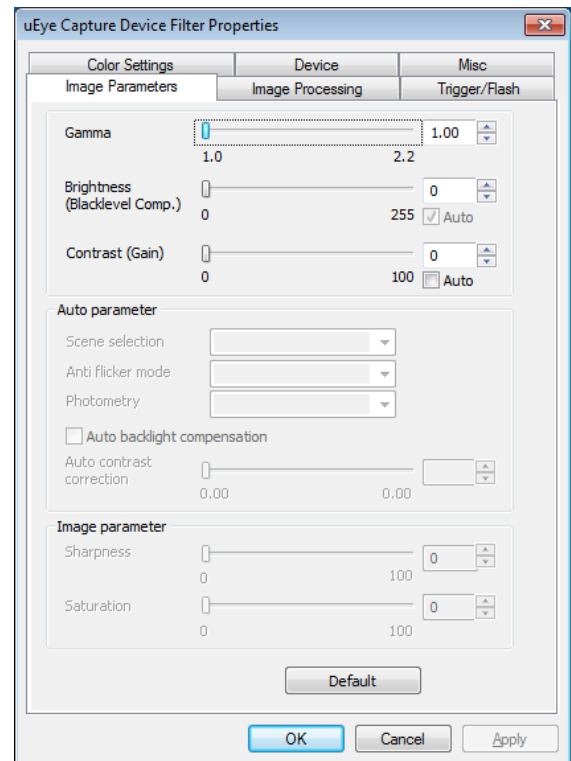
Ensure **Auto Gain** control is off.

Set **Auto Colour Correction** on.

Set **White Balance** to “**Cool White**”.

Note: to change the IDS uEye camera shutter speed select **View, Configuration, Video, Video Capture Device, Advanced Video Config.**

(Other cameras will expose these settings differently)



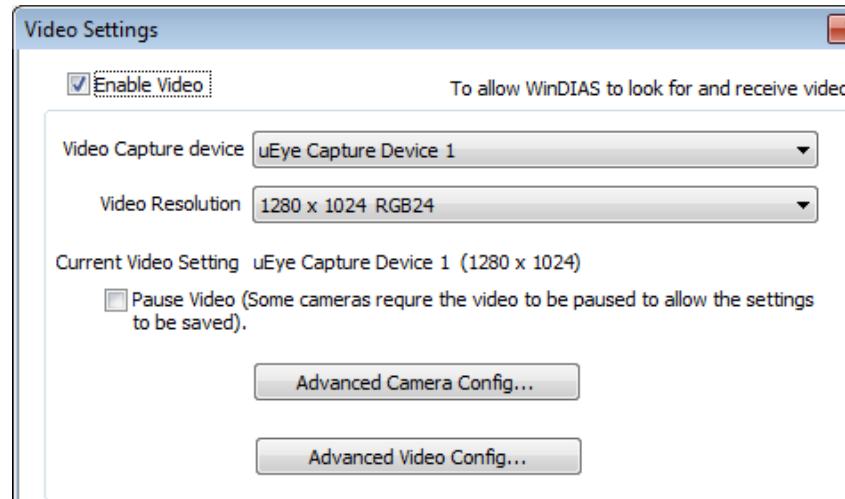


Save Camera Settings

These instructions are for IDS uEye cameras with driver version 3.82, if you are using a different camera refer to instructions provided with the camera.

To ensure the IDS camera settings persist from one session to the next select:

Select **Video** from the **Settings** menu to display the **Video Settings** window.



To save the settings you will need to tick the **Pause Video** tick box to enable the save settings options in **Advanced Camera Config**.

Note: Pause Video is not required for all cameras, but is required for IDS uEye cameras with driver version 3.7 and higher.

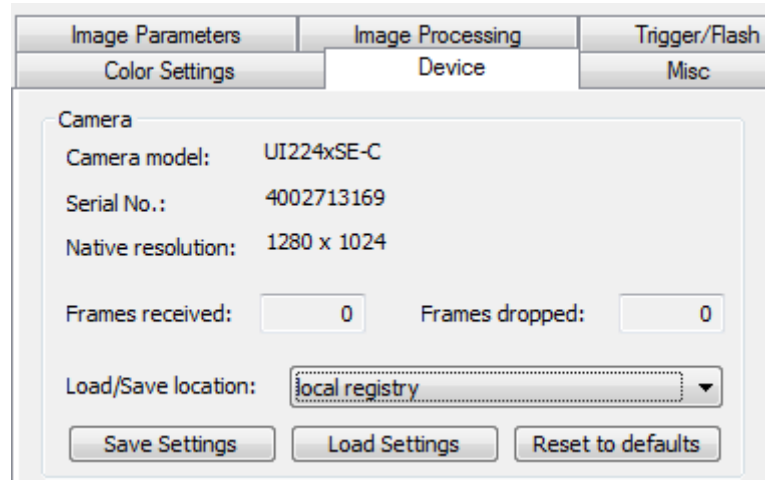
In **Advanced Camera Config**, select the **Device** tab.

Select **local registry** in **Load/Save location**. Then click **Save Settings**.

Note: These are saved on a per user basis; a different user on the same PC will not see these settings.

To save settings for another user or to transfer to another PC use the **display file selection box** option for **Load/Save location** and use the **Save Settings** and **Load Settings** buttons.

The default location for these files may not be a user writable location, so you may need to change to somewhere more suitable like your Documents or Public Documents folder.



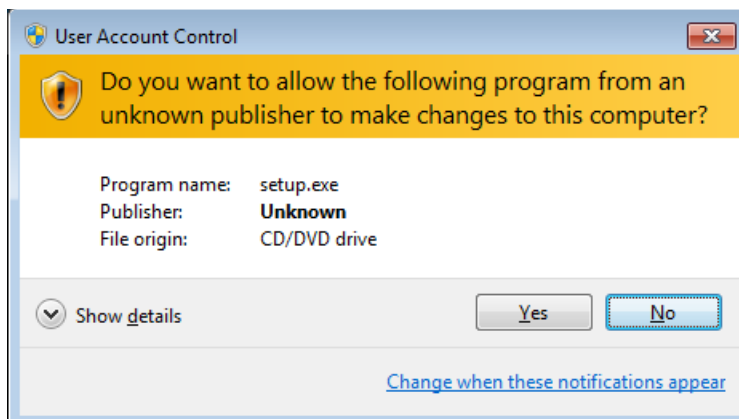
When finished then click **OK**.

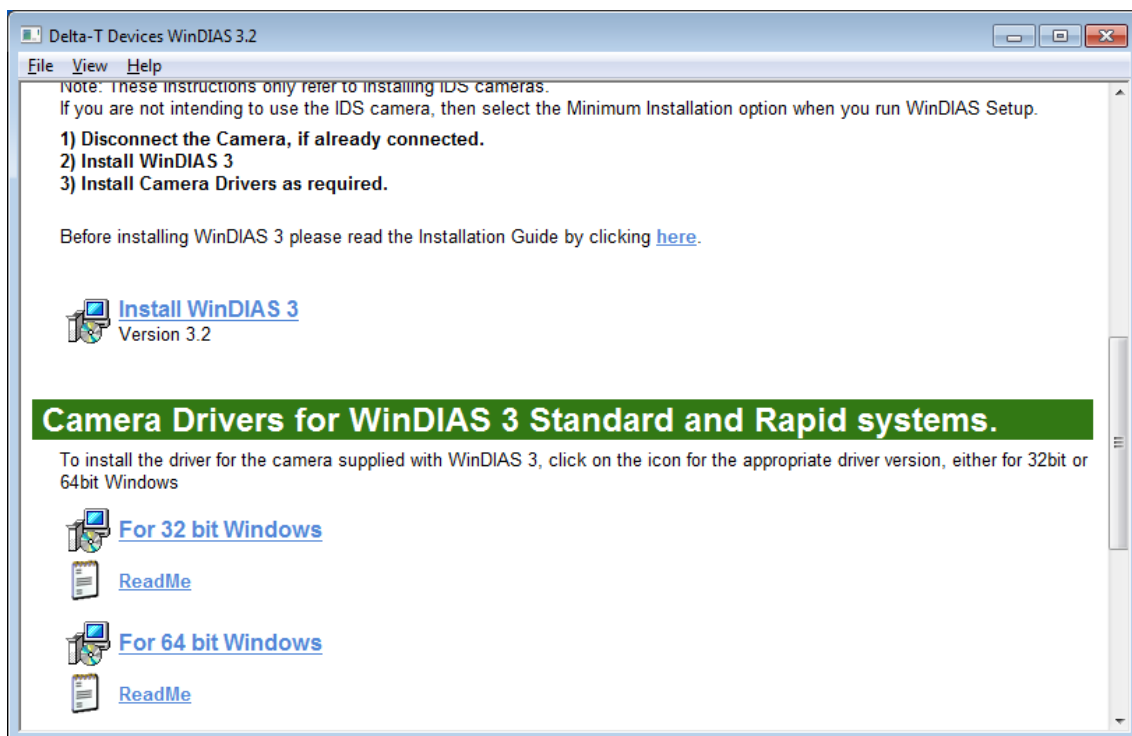


Visual Step-By-Step

The rest of this document is a sequence of images illustrating what you may expect to see when installing the software.

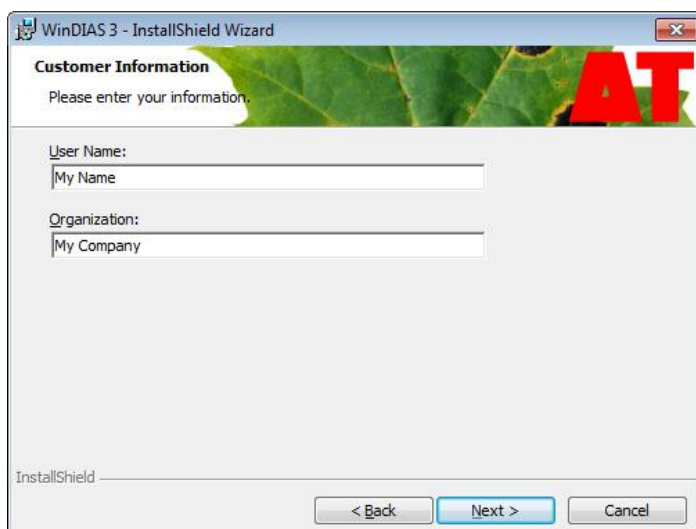
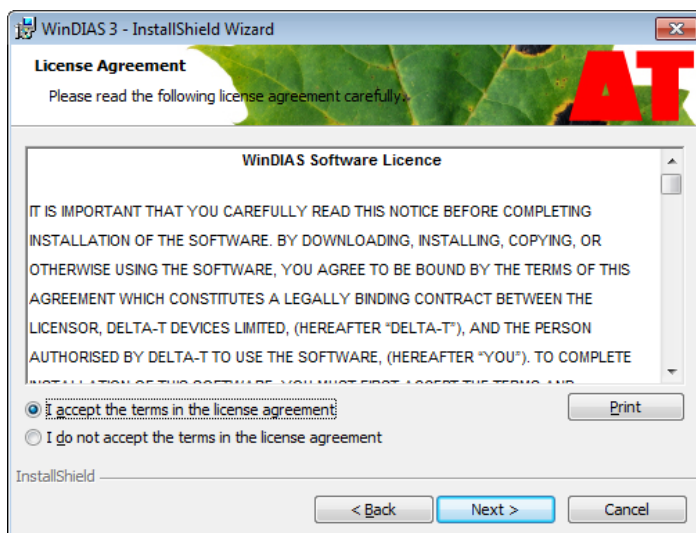
Running CD

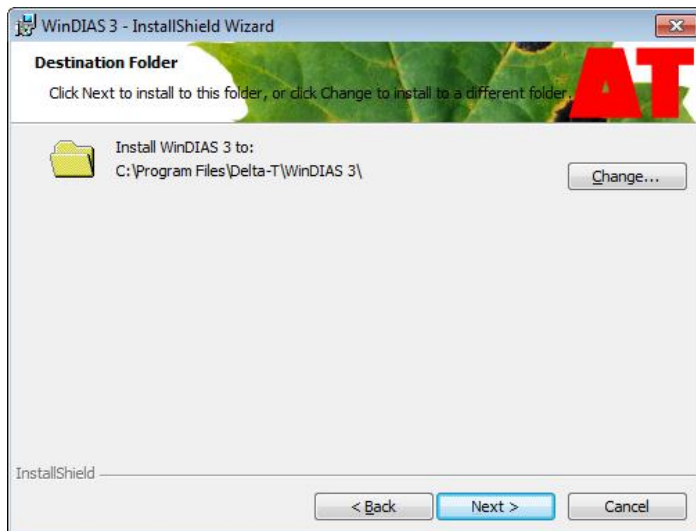




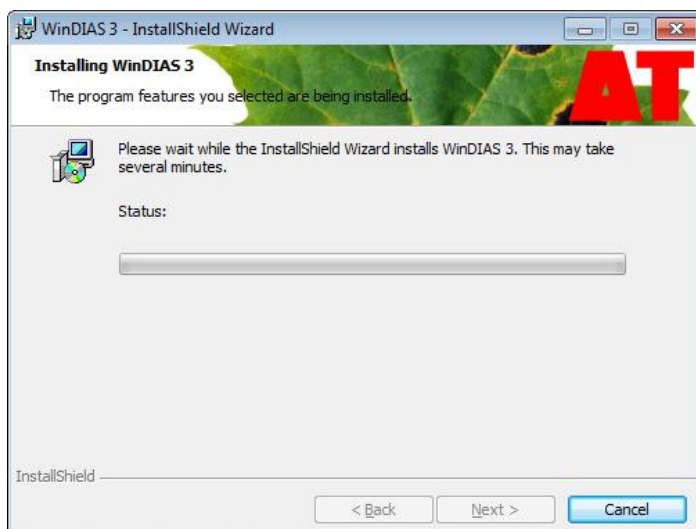
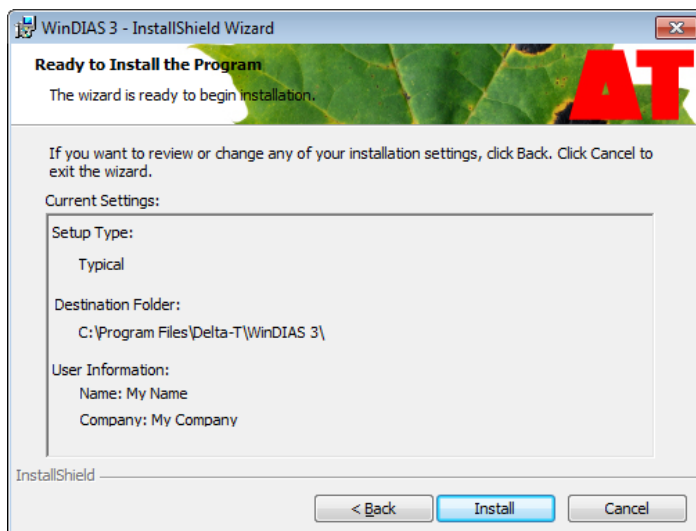


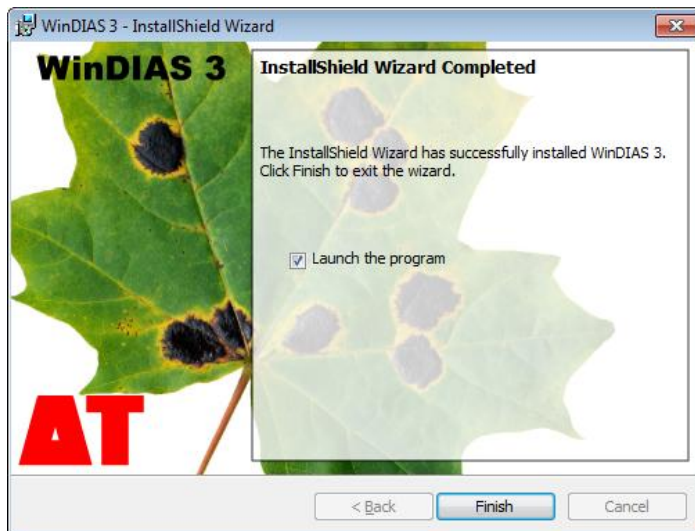
WinDIAS 3 Setup





Click next to accept default installation folder, or click change to select an alternative location.

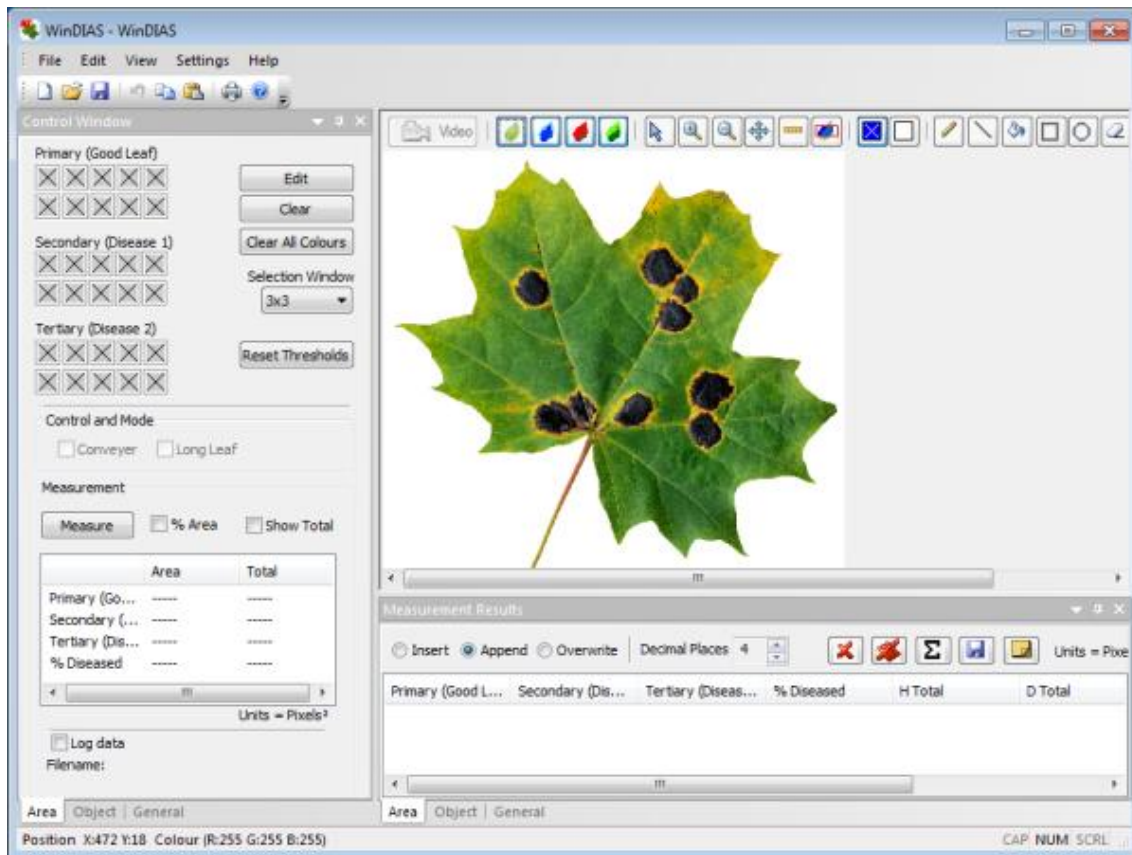




Installation complete, click Finish to close WinDIAS 3 Setup and to launch WinDIAS 3.
Un-tick Launch program if you are not ready to run WinDIAS 3 yet.



WinDIAS 3 successfully installed

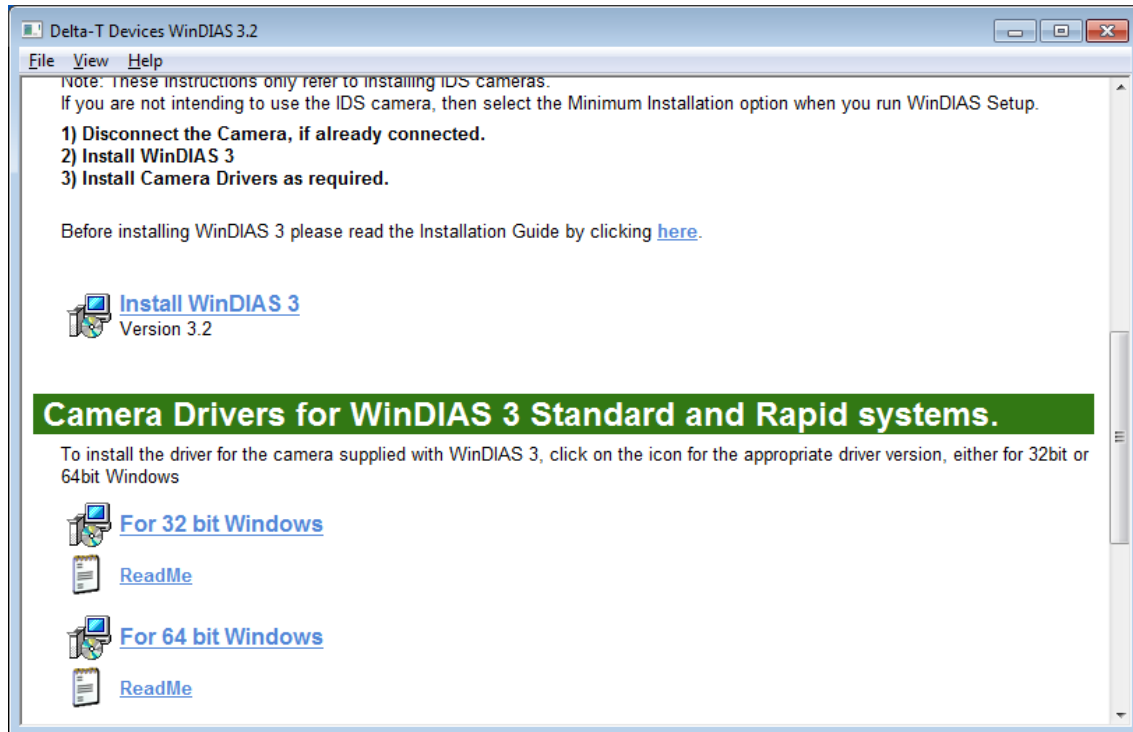


Now install drivers for cameras if using a camera supplied with a WinDIAS 3 Standard or Rapid system.

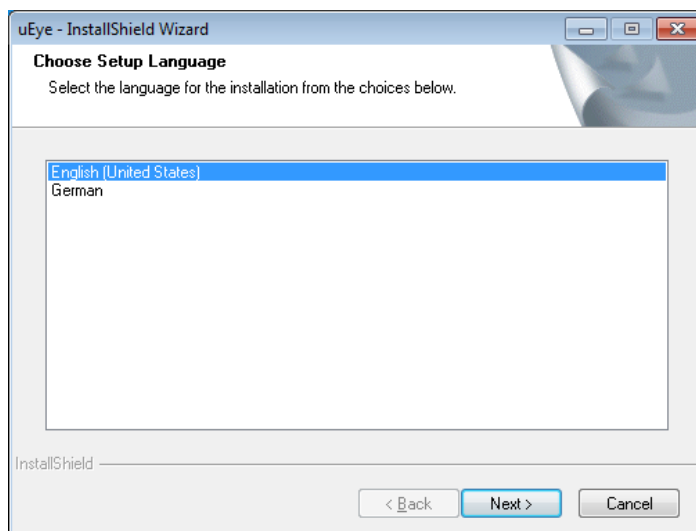


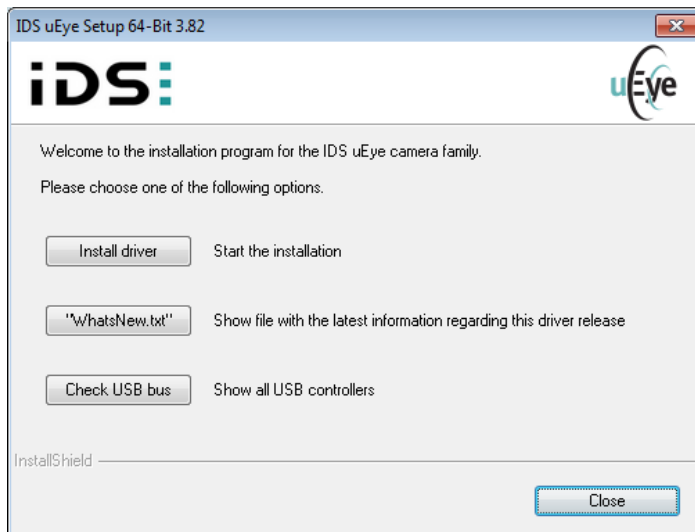
Installing camera drivers for WinDIAS 3 Standard and Rapid Systems.

(IDS μ Eye Cameras)

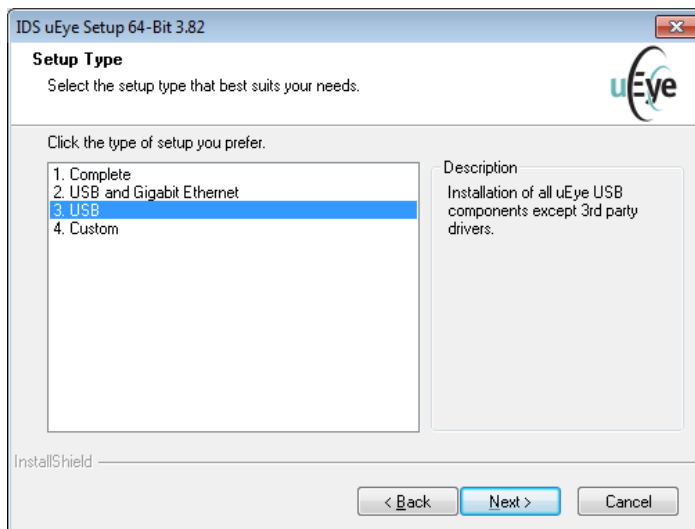


Select the appropriate driver either 32bit or 64 bit to your version of Windows.

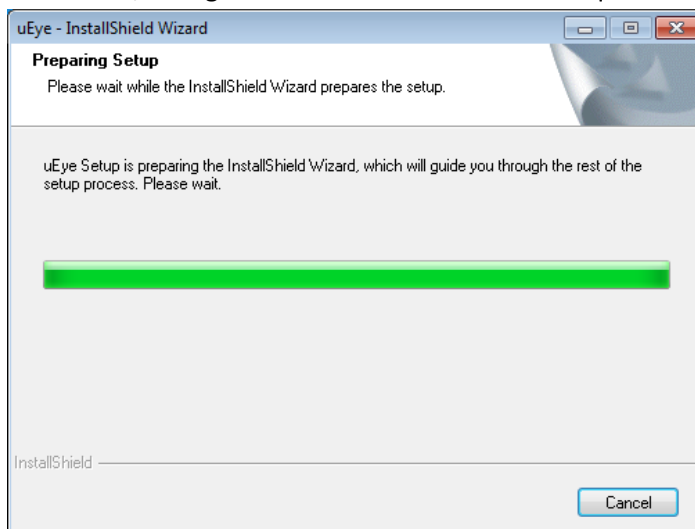


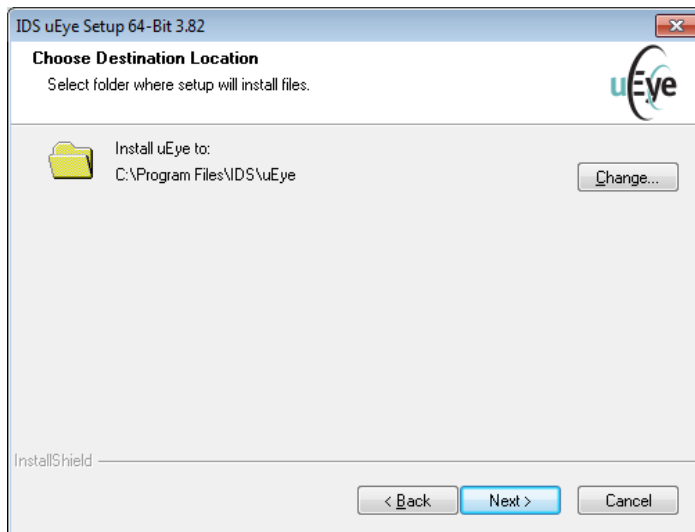


Click 'Install driver' button.



Select USB, as Gigabit Ethernet drivers are not required.





Click next to accept default installation folder, or click change to select an alternative location.

