

Example use of Time of Day in DeltaLINK

Time of Day is available as a control variable in DeltaLINK version 2.3 or later.

This example describes its use for turning off an irrigation system at night. During the day the irrigation is controlled by the soil moisture content theta.

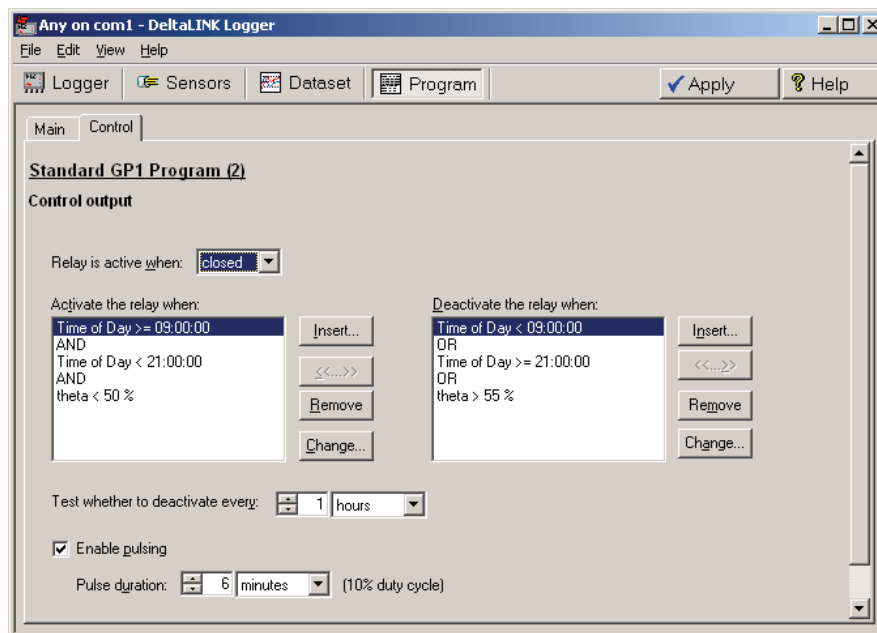
How to turn off irrigation at night

Some plant growers prefer not to irrigate at night - they don't like the roots to stay wet all night.

To turn off at night requires use of the logger program type **Standard GP1 Program**.

This enhancement permits use of the **Time of Day** in the **Control** page logic, in addition to the soil moisture condition.

In this example the irrigation is turned off between 9 at night and 9 in the morning.



Note Carefully the Logic:

Activate the relay when:

Time of Day >= 09:00:00
AND
Time of Day < 21:00:00
AND
theta < 50%

Deactivate the relay when:

Time of Day < 09:00:00
OR
Time of Day >= 21:00:00
OR
theta > 55%

This says "Turn the water on if it's daytime **and** if it's dry.
Turn it off at night **or** if it's wet".

Note also: The soil moisture threshold levels set in this example were chosen somewhat arbitrarily for a peat-based artificial compost. You should set threshold levels appropriate to your particular soil or growing medium and the particular needs of your plant.