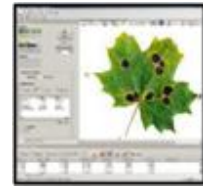


WinDIAS 3.2 Release Notes

WinDIAS 3.2

3 Jun 2011



What's new in WinDIAS 3.2

1. An undo button has been added. This will undo previous colour picking or image editing actions.
2. A **Reset Thresholds** button has been added. This resets the boundaries of the volume in RGB colour space surrounding each picked colour - back to the default value of ± 20 RGB units.
3. The **Clear All** button has been renamed **Clear All Colours**, to avoid confusion with item 2.
4. The IDS uEye camera driver provided on the WinDIAS CD has now been upgraded to version 3.8. This supports Microsoft **Windows 7**, providing separate **32** and **64 bit driver** files for the cameras.
The user is now asked to select which driver to install during the install process.
5. A **Pause Video** checkbox has been added to the **Settings, Video** window. It is now necessary to pause the video stream from the video camera in order to enable the video camera software settings to be saved.
This was not necessary with previous versions of the camera driver software from IDS.

Compatibility

Users should upgrade their IDS uEye camera driver to version 3.8 as provided on the WinDIAS 3.2 CD or obtainable online at www.ids-imaging.com.

Installation

See the full installation instructions provided on the WinDIAS 3.2 CD

Fixes in WinDIAS 3.2

1. Software stability was improved by forcing a recreation of the image edit overlay if the image size changes.
2. Corrected the RGB colours used on the conveyor snapshot overlay.
3. Fixed a problem caused when the **File, New** command was used when in the conveyor mode.
4. Fixed - Last image in **Batch Process** was not recorded.
5. Improved the behaviour of the colour picking button.
6. Fixed – corruption of log file name in batch mode.
7. More protection added when selecting non-.wd3 format image files.
8. Added **All File Types** to **Import Image**.
9. In **Minimum Area** units added squared to the area labels.
10. Fixed - **Grab** showed old image for a short time.
11. Fixed – **Conveyor** mode waiting for message box response before starting.
12. Fixed – unravelled screens - artefact from previous image overlay.

13. Fixed - **Batch Process** mode now creates results files in the correct chosen directory, and subsequent non batch mode readings are saved correctly to the separate chosen location.
14. Fixed - the default primary and secondary colours in conveyor mode were the inverse of the colours in the static mode. – Now the same colour as chosen in settings.
15. Fixed - the **Total** % diseased leaf area was calculated wrongly as the average of the individual percentages – Now uses the ratio of cumulative totals.
16. Fixed - in the summary statistics it was not helpful to calculate the cumulative percentage total, which could rise to greater than 100% - Now shows blank.
17. Fixed - corrupt display on **File New**, (video off)
18. Fixed - measure single fails on drawn object
19. Fixed - State engine fails exiting **Long Leaf** mode
20. Fixed - Confusing behaviour of Results file if you take measurements before or after running a **Batch Process**.
21. Fixed - wrong Results window in **Batch Process** mode
22. Fixed - confusing message at end of **Batch Process**
23. Fixed - **Batch Process** should not permit overwriting data onto an existing file
24. Fixed - wrong image on changing Tab after **Import Image** if Video ON
25. Fixed - **Batch Process**. Change measurement window tab. Fatal crash.
26. Fixed - printing of blank sheets.
27. Fixed - issue with **Measurement Results** windows, as was still clearing results after import image.

Version 3.1

1. TWAIN support added.
2. Batch processing of saved image files added.
3. Video stream can be turned off for the benefit of those who use images from a scanner or still camera.
4. On first start-up after installation, WinDIAS starts with a still image of a maple leaf loaded, and the live video turned off.
On Exit the program saves your configuration and restarts the same way.

Version 3.0

1. Our earlier DOS-based DIAS image analysis software was rewritten to run under Microsoft Windows and work with USB2 video cameras.